

Definition of the general layout for safety

III Valico dei
Giovi High
Speed Railway

Year:
2012

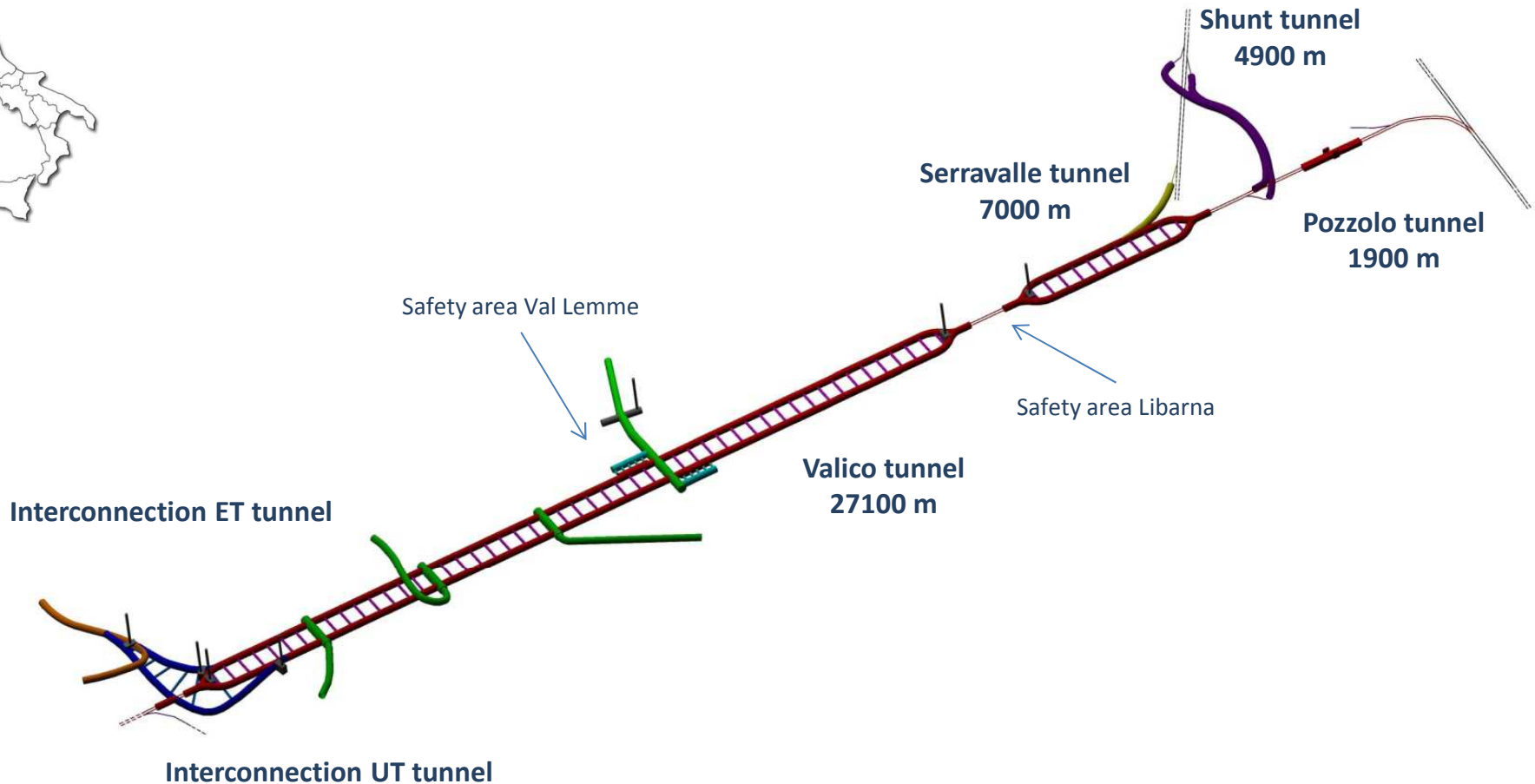
Client:
RFI Spa

Contractor:
Consortium COCIV

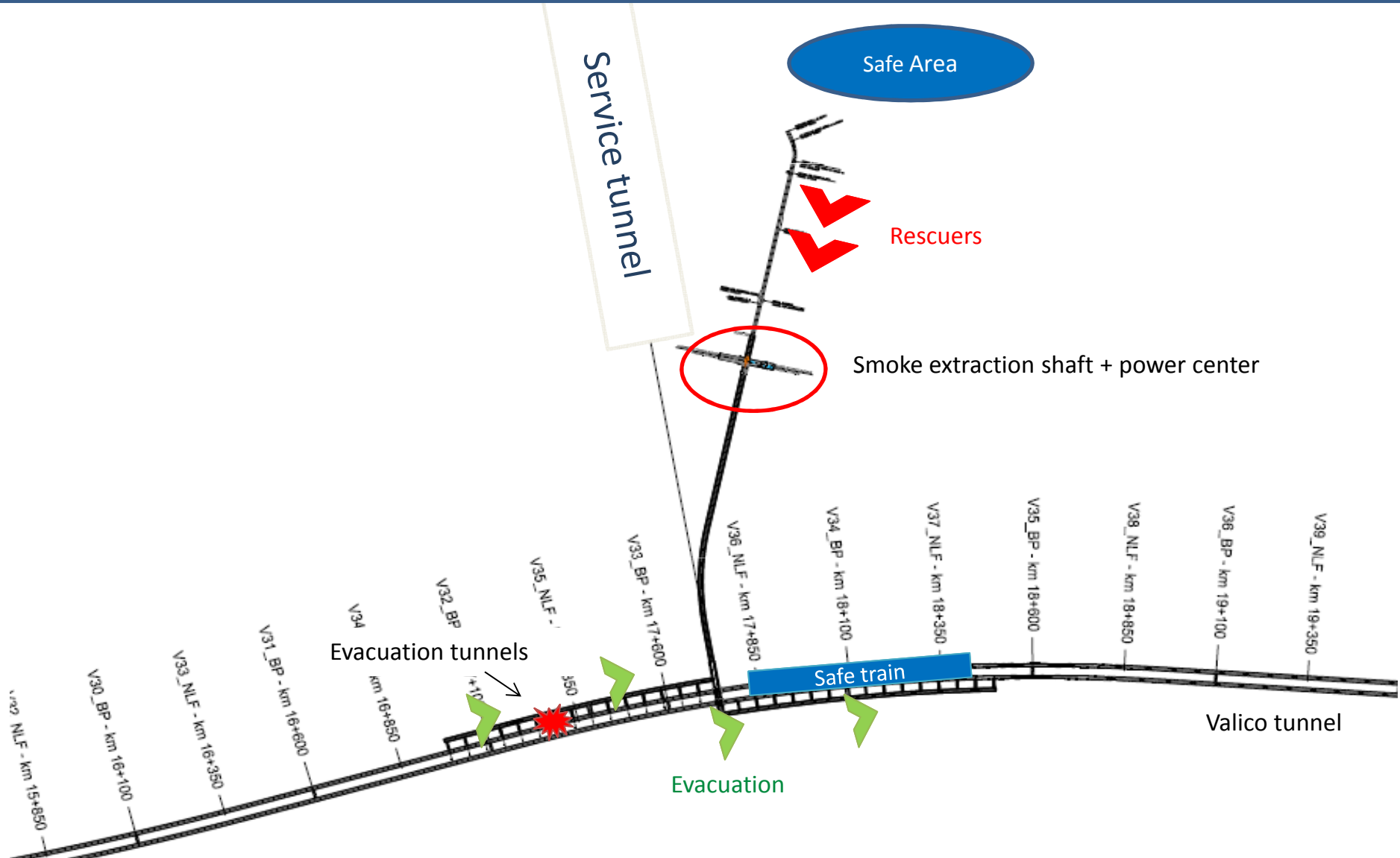
Total length:
54 km

Works amount:
€ 6.600.000.000,00

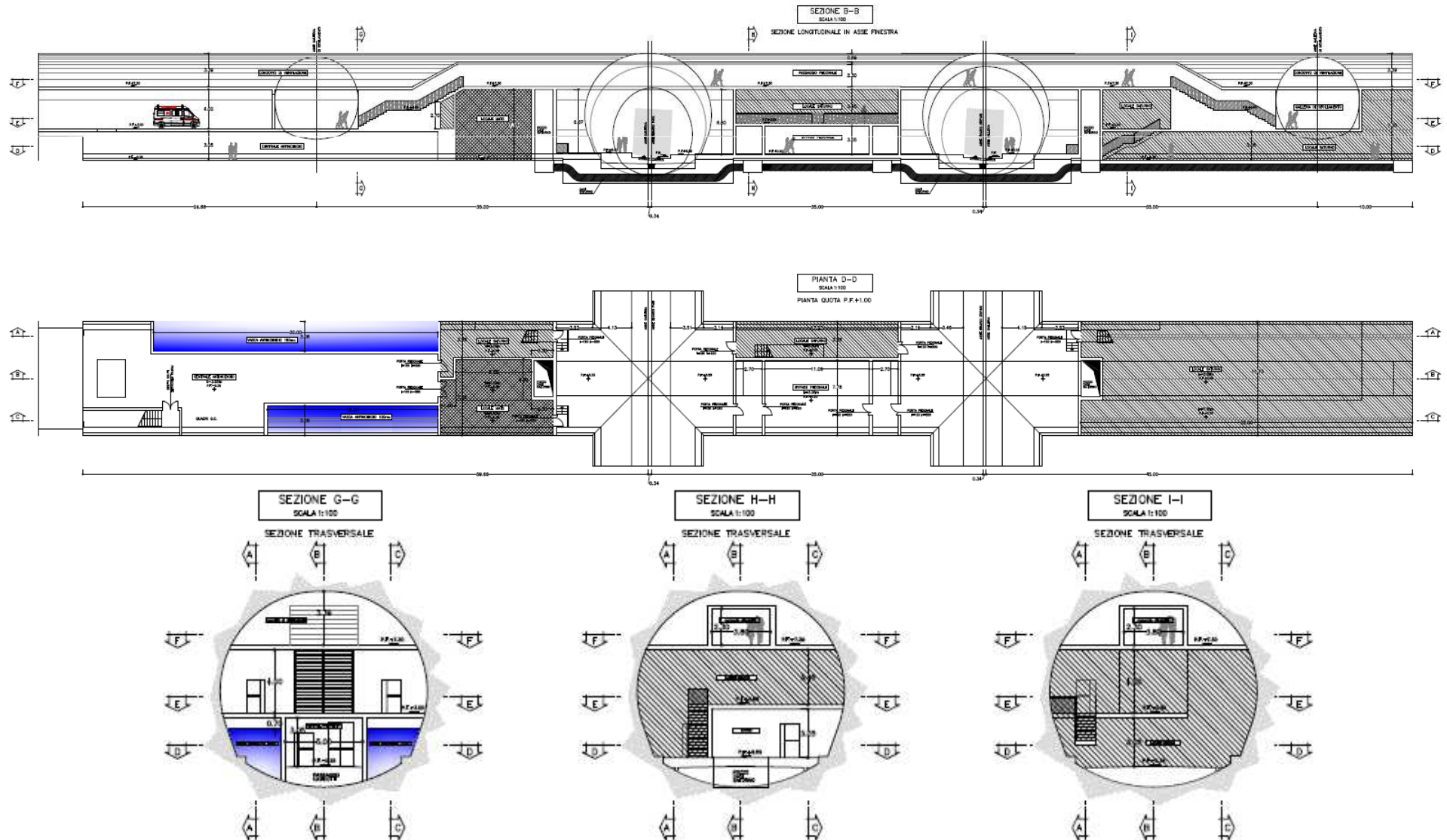
- Activities:**
- Adaptation of the final design to the new laws
 - Safety documentation
 - Ventilation system
 - Firefighting system
 - Drainage system



Safe area general layout definition starting from emergency procedures

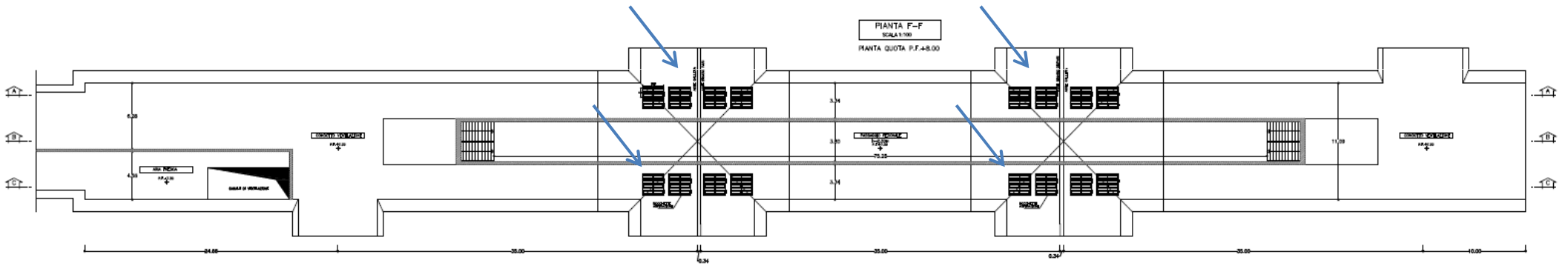


Safe area functional layout design



3D simulation of smoke extraction system

extraction vents in the ceiling on the graft service tunnel

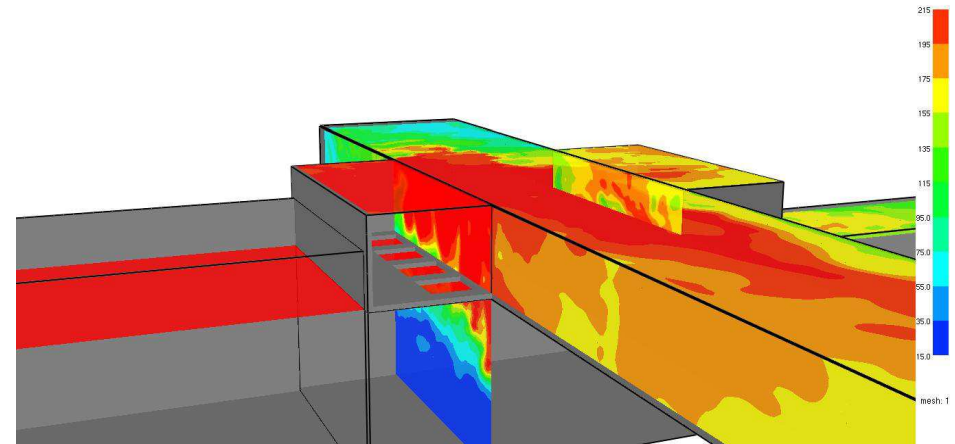
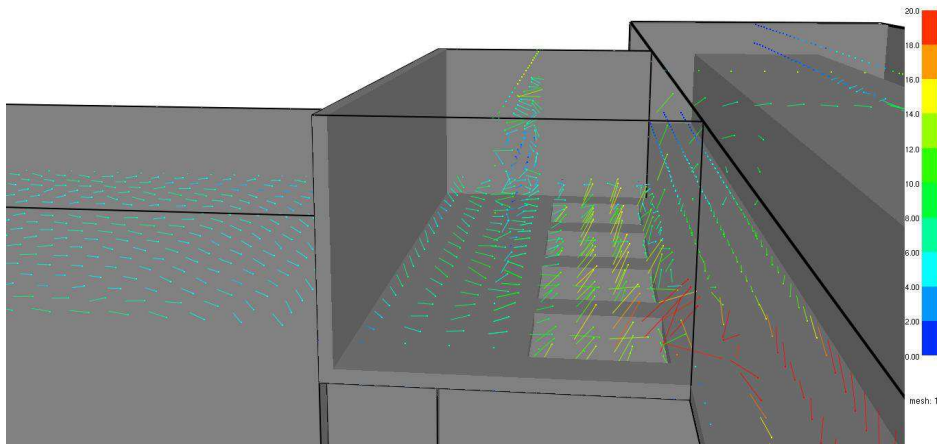


Smokeview 5.5.6 - ,terzovalico_38_0001_00000060_00.q

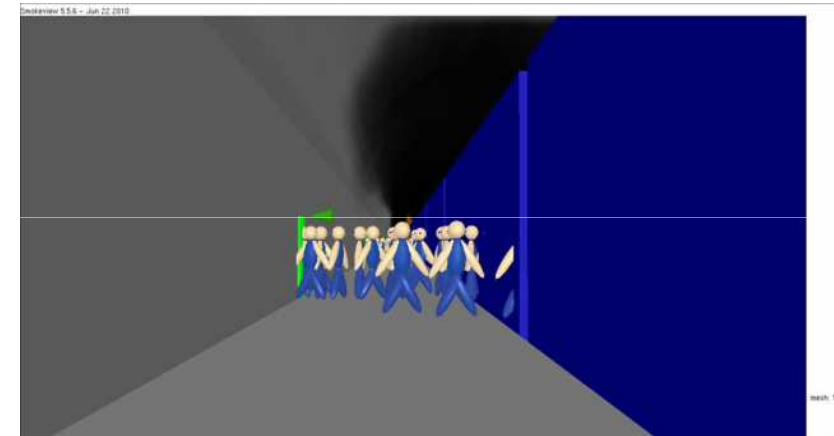
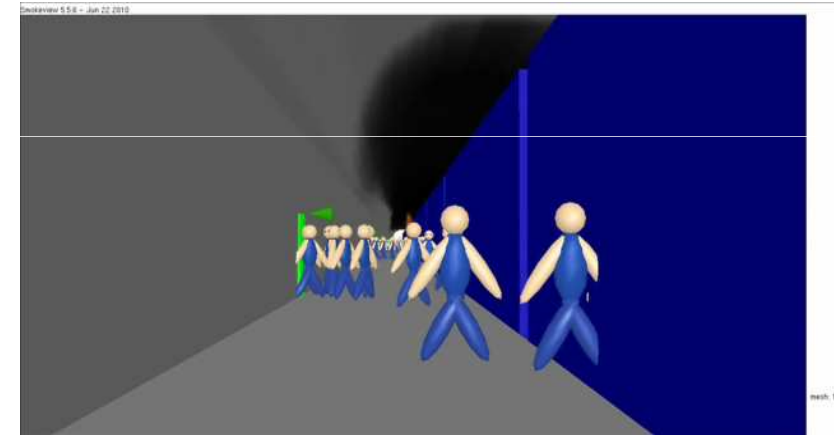
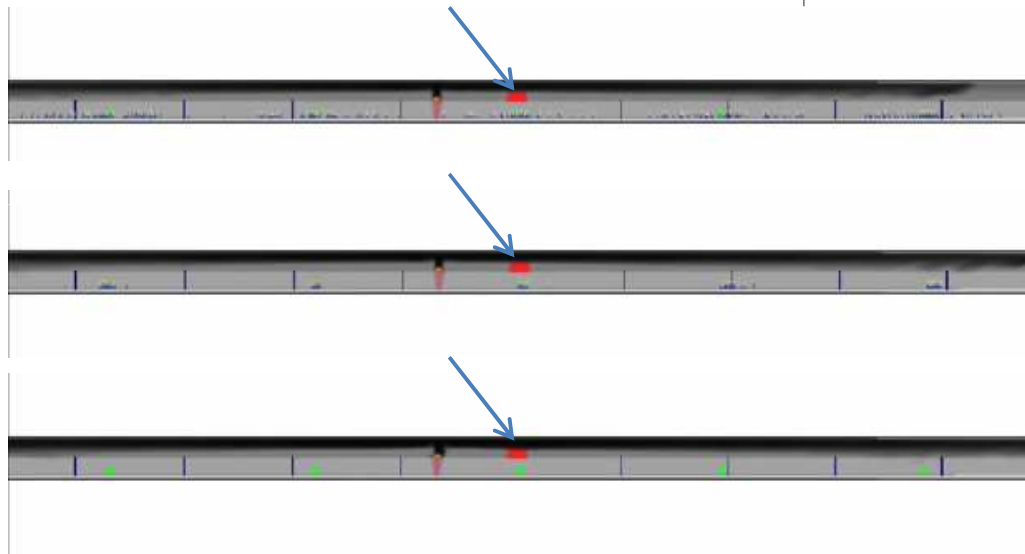
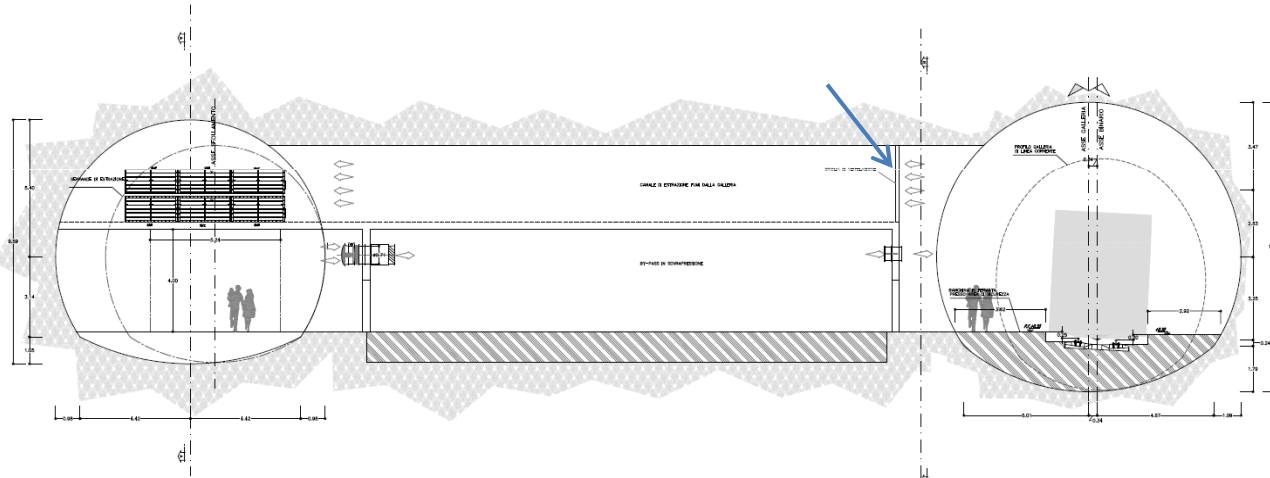
Plot3d
vel
m/s

Smokeview 5.5.6 - ,terzovalico_38_0001_00000060_00.q

Plot3d
temp
C



3D simulation of smoke extraction system



3D evacuation simulation

